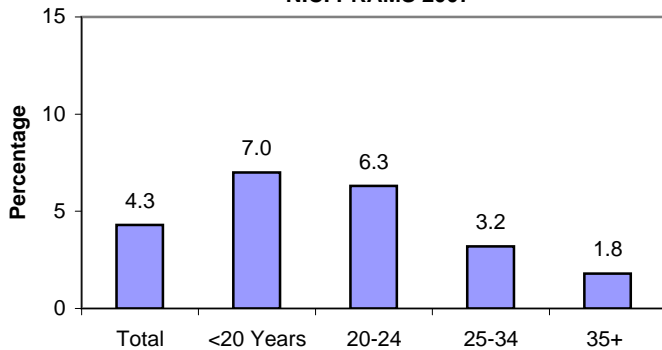


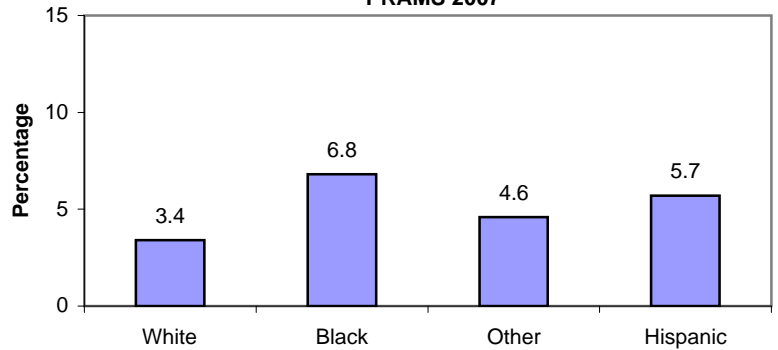
# SURVEILLANCE UPDATE

## Maternal Physical Abuse During Pregnancy: 2007 N.C. Pregnancy Risk Assessment Monitoring System

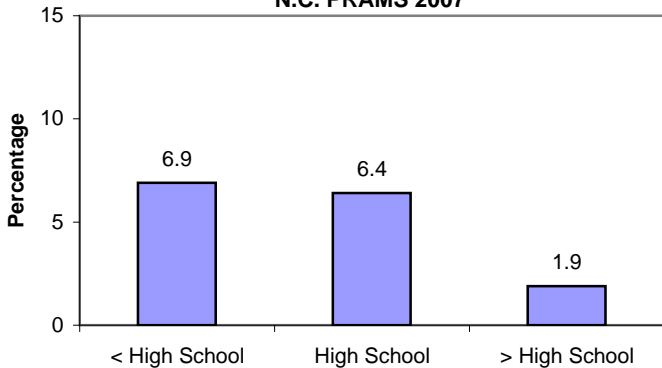
Percentage of N.C. pregnant women who were physically abused by anyone during their pregnancy, by age group:  
N.C. PRAMS 2007



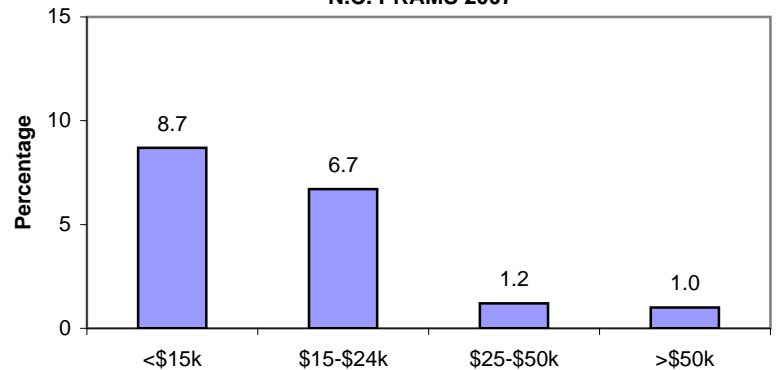
Percentage of N.C. pregnant women were physically abused by anyone during their pregnancy, by race/ethnicity: N.C. PRAMS 2007



Percentage of N.C. pregnant women were physically abused by anyone during their pregnancy, by educational attainment:  
N.C. PRAMS 2007



Percentage of N.C. pregnant women who were physically abused by anyone during their pregnancy, by income level:  
N.C. PRAMS 2007



All estimates are weighted to reflect the entire population of N.C. women who gave birth in 2007. Excluded from the sampling frame are births to N.C. residents that took place out of state, those where the birth certificate did not contain the mother's last name, multiple births of 4 or more, and birth to mothers under the age of 13. Mothers who reported during their most recent pregnancy, they were physically abused by anyone.

\*Use caution when interpreting: small sample size

The N.C. Pregnancy Risk Assessment Monitoring System (N.C. PRAMS) is a Centers for Disease Control and Prevention (CDC) initiative to reduce infant mortality and low birth weight. N.C. PRAMS is a random, stratified, monthly mail/telephone survey of North Carolina women who recently delivered a live-born infant. Each month, a sample of approximately 200 women with recent live-born deliveries is drawn from the Provisional Birth File. Every year a core set of questions is asked of these women before, during and after pregnancy. The data that PRAMS collects strives to improve the health of infants and mothers, especially as it is used for planning and assessing health programs, can be used to identify groups of women and infants at high risk for health problems, to monitor changes in health status, and to measure progress towards goals in improving the health of mothers and infants. See the N.C. PRAMS website for more information, specific details on item responses, and data limitations: <http://www.schs.state.nc.us/SCHS/prams>.