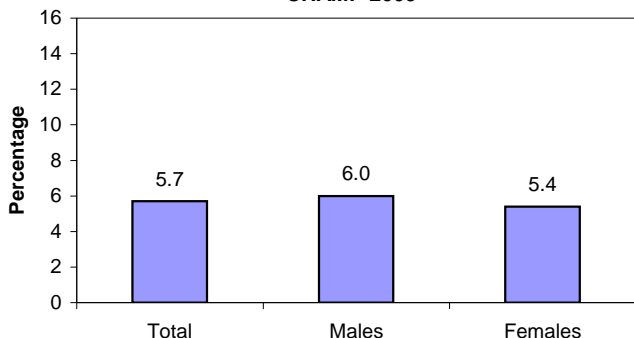


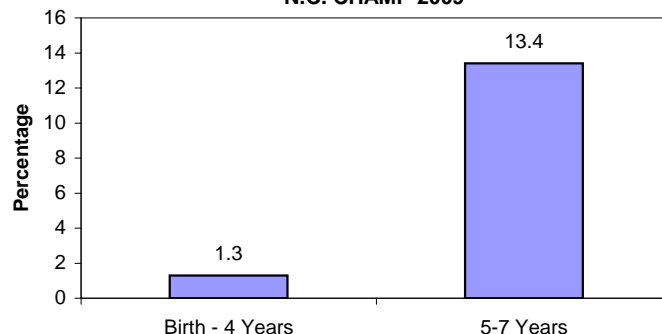
SURVEILLANCE UPDATE

Safety Seat Use: 2009 Child Health Assessment & Monitoring Program (CHAMP)

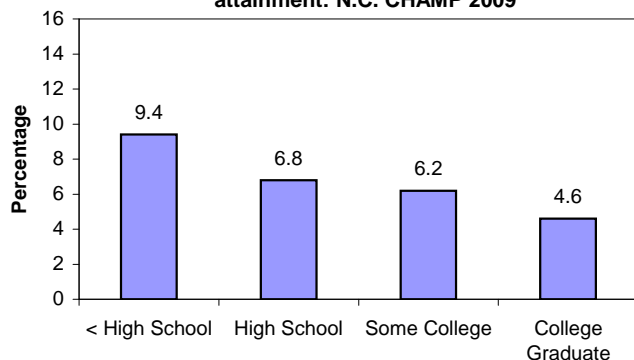
Percentage of N.C. parents who reported that their children do not always ride in a child safety seat when the parent is driving, by child gender: N.C. CHAMP 2009



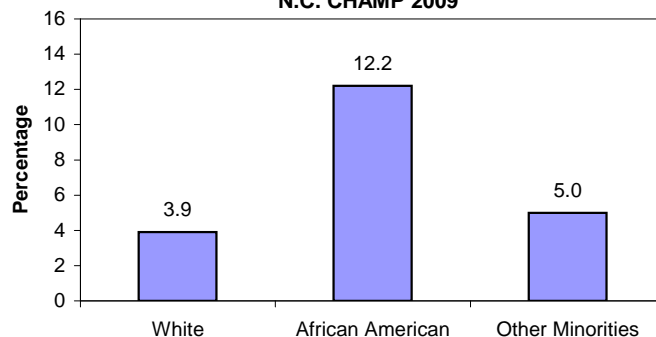
Percentage of N.C. parents who reported that their children do not always ride in a child safety seat when the parent is driving, by child age group: N.C. CHAMP 2009



Percentage of N.C. parents who reported that their children do not always ride in a child safety seat when the parent is driving, by parent educational attainment: N.C. CHAMP 2009



Percentage of N.C. parents who reported that their children do not always ride in a child safety seat when the parent is driving, by child race: N.C. CHAMP 2009



The North Carolina Child Health Assessment and Monitoring Program (NC CHAMP) is a surveillance system that collects information about the health characteristics of children from age 0 to 17 years. NC CHAMP is a follow-up survey of the Behavioral Risk Factor Surveillance System (BRFSS) telephone survey of adults, ages 18 and older. All adult respondents with children living in their household are invited to participate in the CHAMP survey. One child is randomly selected from the household and the adult most knowledgeable about the health of the selected child is interviewed in a follow-up survey. This surveillance update includes data collected in 2009 on 911 parental surveys of children ages 7 and younger. Results presented here are for parents who report that their child rode in safety seat 'most of the time', 'some of the time' or 'never' when parent was driving and child was riding in vehicle. Percentages are weighted to population characteristics. For further information about NC CHAMP, including specific data on 95 percent confidence intervals, please visit www.schs.state.nc.us/SCHS/champ or contact CHAMPstaff@dhhs.nc.gov.