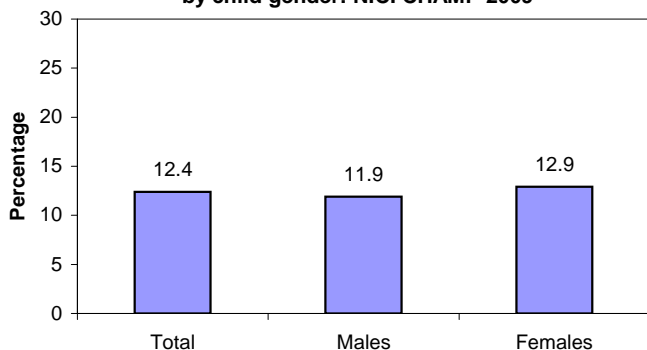


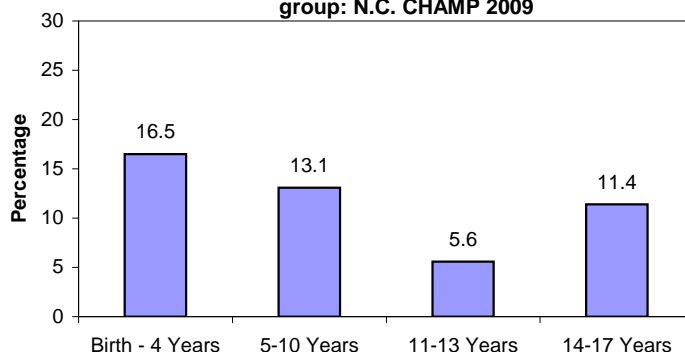
SURVEILLANCE UPDATE

Prescription Drug Storage: 2009 Child Health Assessment & Monitoring Program (CHAMP)

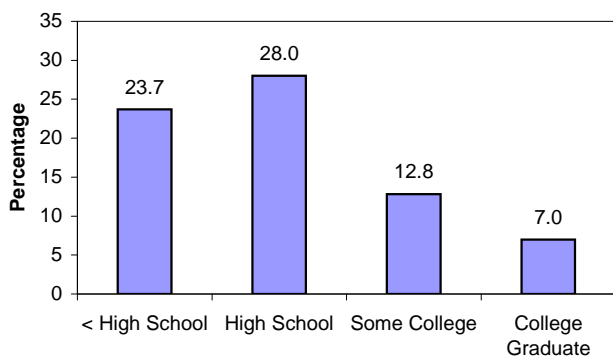
Percentage of N.C. parents who reported that they keep all prescription medication in a locked place, by child gender: N.C. CHAMP 2009



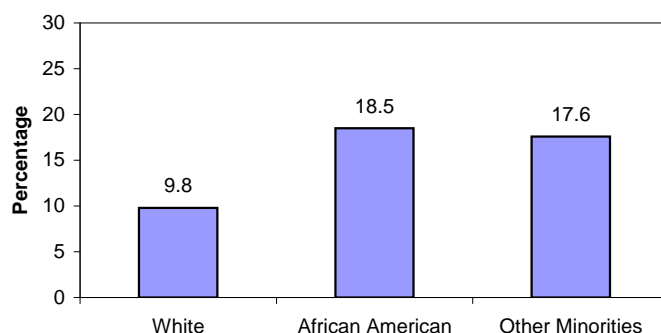
Percentage of N.C. parents who reported that they keep all prescription medication in a locked place, by child age group: N.C. CHAMP 2009



Percentage of N.C. parents who reported that they keep all prescription medication in a locked place, by parent educational attainment: N.C. CHAMP 2009



Percentage of N.C. parents who reported that they keep all prescription medication in a locked place, by child race: N.C. CHAMP 2009



The North Carolina Child Health Assessment and Monitoring Program (NC CHAMP) is a surveillance system that collects information about the health characteristics of children from age 0 to 17 years. NC CHAMP is a follow-up survey of the Behavioral Risk Factor Surveillance System (BRFSS) telephone survey of adults, ages 18 and older. All adult respondents with children living in their household are invited to participate in the CHAMP survey. One child is randomly selected from the household and the adult most knowledgeable about the health of the selected child is interviewed in a follow-up survey. This surveillance update includes data collected in 2009 on 1,880 parental surveys of children ages 0 to 17. Results presented here are for parents with prescription medications in their home that reported 'yes' to the question 'Do you keep all of these prescription medications in a locked place? By locked we mean you need a key or combination to open the place where medications are stored.' Percentages are weighted to population characteristics. For further information about NC CHAMP, including specific data on 95 percent confidence intervals, please visit www.schs.state.nc.us/SCHS/champ or contact CHAMPstaff@dhhs.nc.gov.