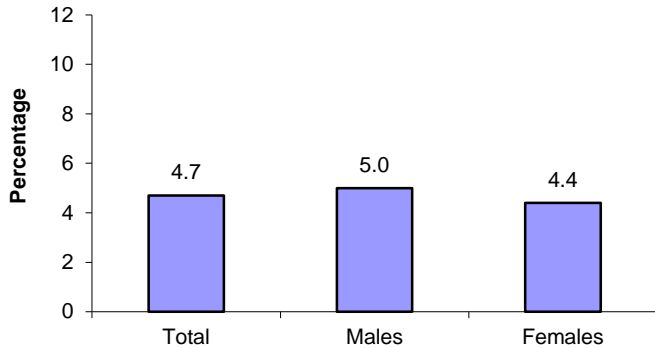


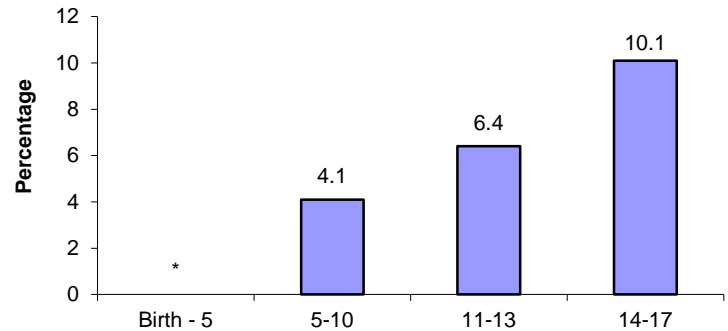
# SURVEILLANCE UPDATE

## Child Injury Hindering Usual Activities, Past Month: 2011 Child Health Assessment & Monitoring Program (CHAMP)

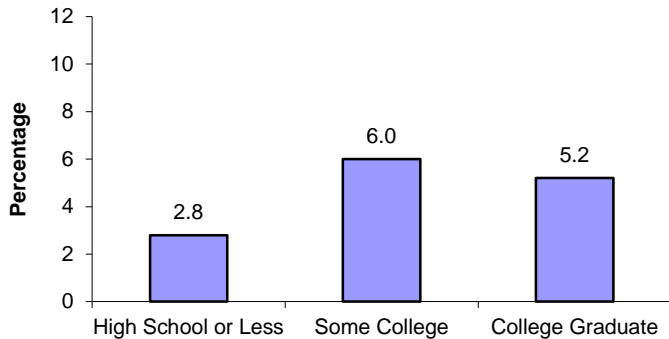
Percentage of N.C. parents who reported their child could not participate in usual activities for one day or more in the past month due to injury, by child gender: N.C. CHAMP 2011



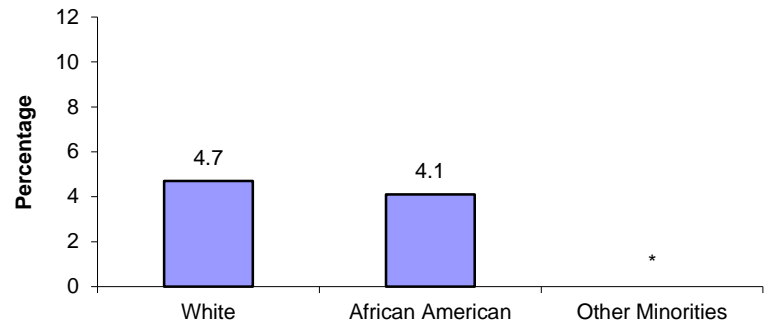
Percentage of N.C. parents who reported their child could not participate in usual activities for one day or more in the past month due to injury, by child age group: N.C. CHAMP 2011



Percentage of N.C. parents who reported their child could not participate in usual activities for one day or more in the past month due to injury, by parent educational attainment: N.C. CHAMP 2011



Percentage of N.C. parents who reported their child could not participate in usual activities for one day or more in the past month due to injury, by child race/ethnicity: N.C. CHAMP 2011



The N.C. Child Health Assessment and Monitoring Program (CHAMP) survey was first developed in the fall of 2004 and implemented in January 2005. CHAMP is the first survey of its kind in North Carolina to measure the health characteristics of children from birth to age 17. CHAMP is a follow-back survey to the BRFSS (Behavioral Risk Factor Surveillance System) which is a telephone survey of adults, ages 18 and older. All adult respondents with children living in their household are invited to participate in the CHAMP survey. One child is randomly selected from the household and the adult most knowledgeable about the health of the selected child is interviewed in a follow-up survey. All questions about the selected child are answered only by the most knowledgeable adult. CHAMP surveys are revised each year to meet the child health surveillance needs of North Carolina. Beginning in 2011, the methodology changed to add cell phone interviews and adopted an improved weighting method known as raking. Both changes allow for more accurate survey estimates. However, data from 2011 and beyond will not be comparable to data from years prior. In 2011, four questions on the topics of child safety and injury were asked of nearly 1,400 parents. Results shown above are based on data from 2011. See the N.C. CHAMP website for more information and data limitations: [www.schs.state.nc.us/SCHS/champ](http://www.schs.state.nc.us/SCHS/champ).