

1,359

NORTH CAROLINA EMERGENCY DEPARTMENT (ED) VISITS FOR OVERDOSE INVOLVING MEDICATIONS OR DRUGS WITH DEPENDENCY POTENTIAL: APRIL 2021

1,359 Overdose ED Visits for Med/Drugs[^] with Dependency Potential in April 2021

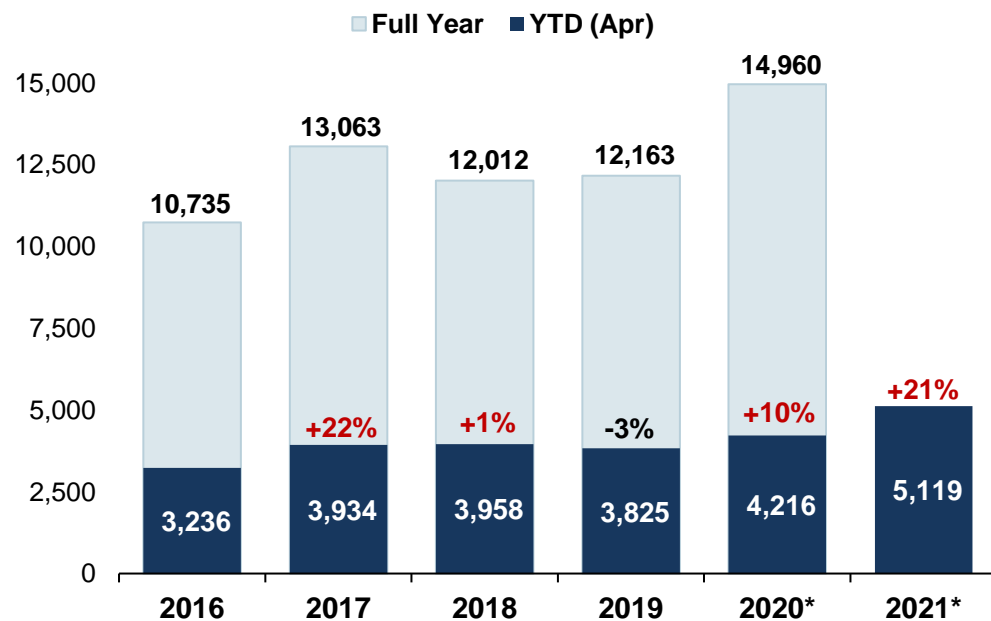
compared to **1,129** in April 2020

Data Source: NC DETECT: ED; Syndrome: Overdose: Unintentional/ Undetermined Medication or Drug Overdose (>14/<66) (ICD-9/10-CM)

[^]Report is based on initial encounter, **unintentional** and **undetermined** intent cases only, for ICD10CM overdose codes of drugs and medicaments with dependency potential within T40, T42, T43, T50.7, and T50.9.

Note: Report is restricted to N.C. residents between the ages 15 to 65 years.

Med/Drug[^] Overdose ED visits by Year: 2016-2021*

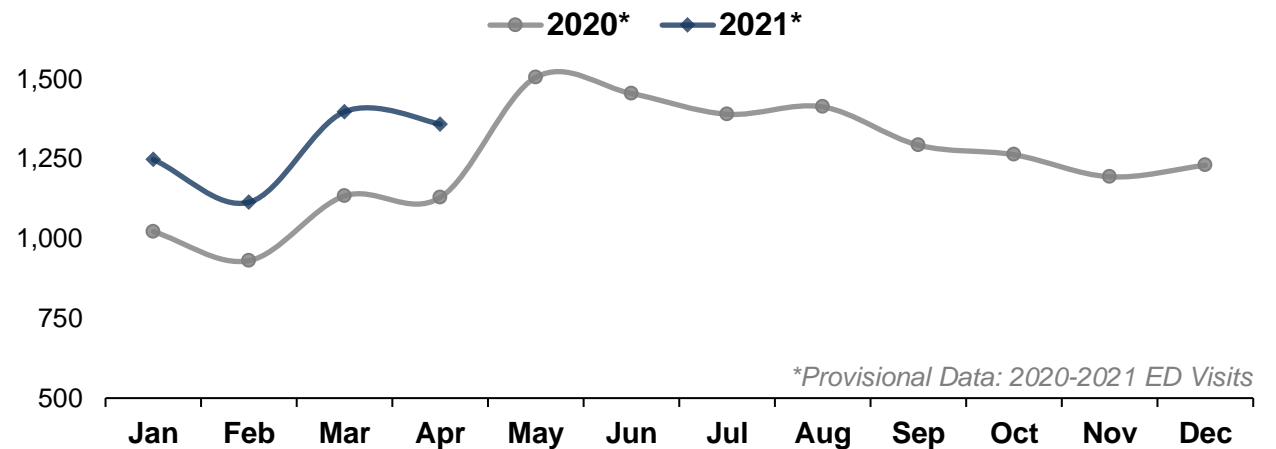


YTD: Year to Date

*Provisional Data: 2020-2021 ED Visits

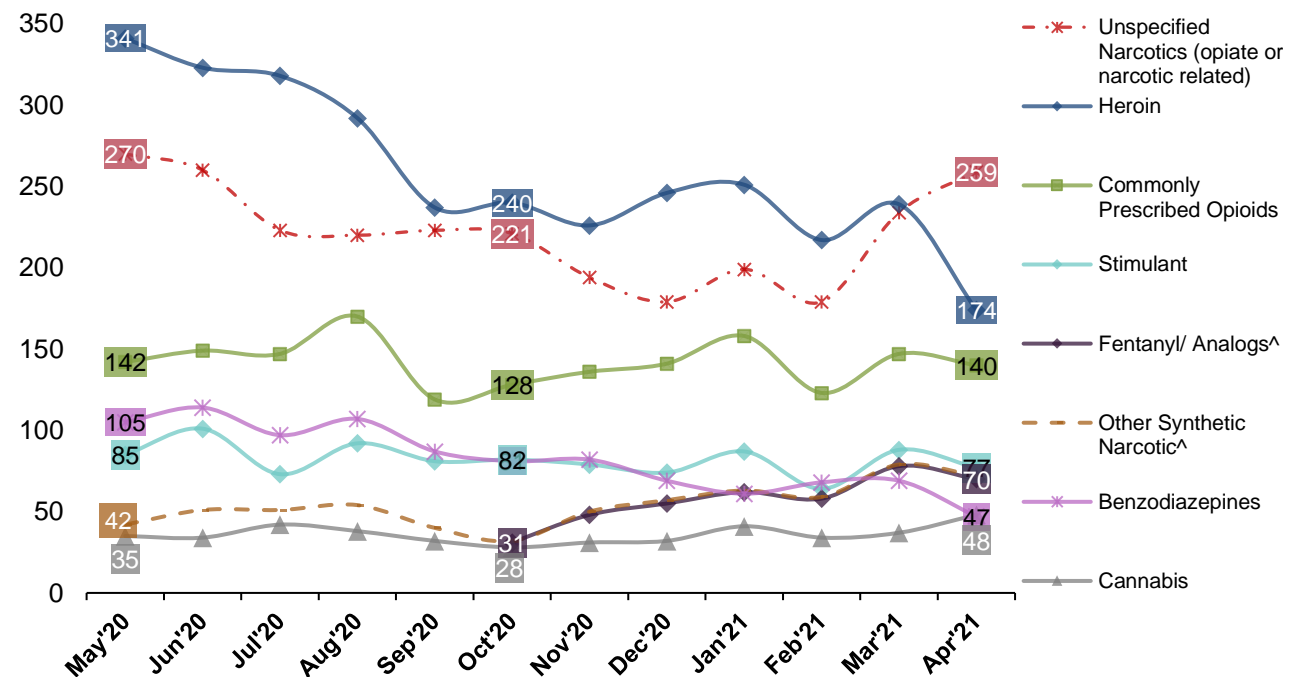
Percent change: YTD total compared to YTD total of previous year

Med/Drug[^] Overdose ED visits by Month: 2020-2021*



*Provisional Data: 2020-2021 ED Visits

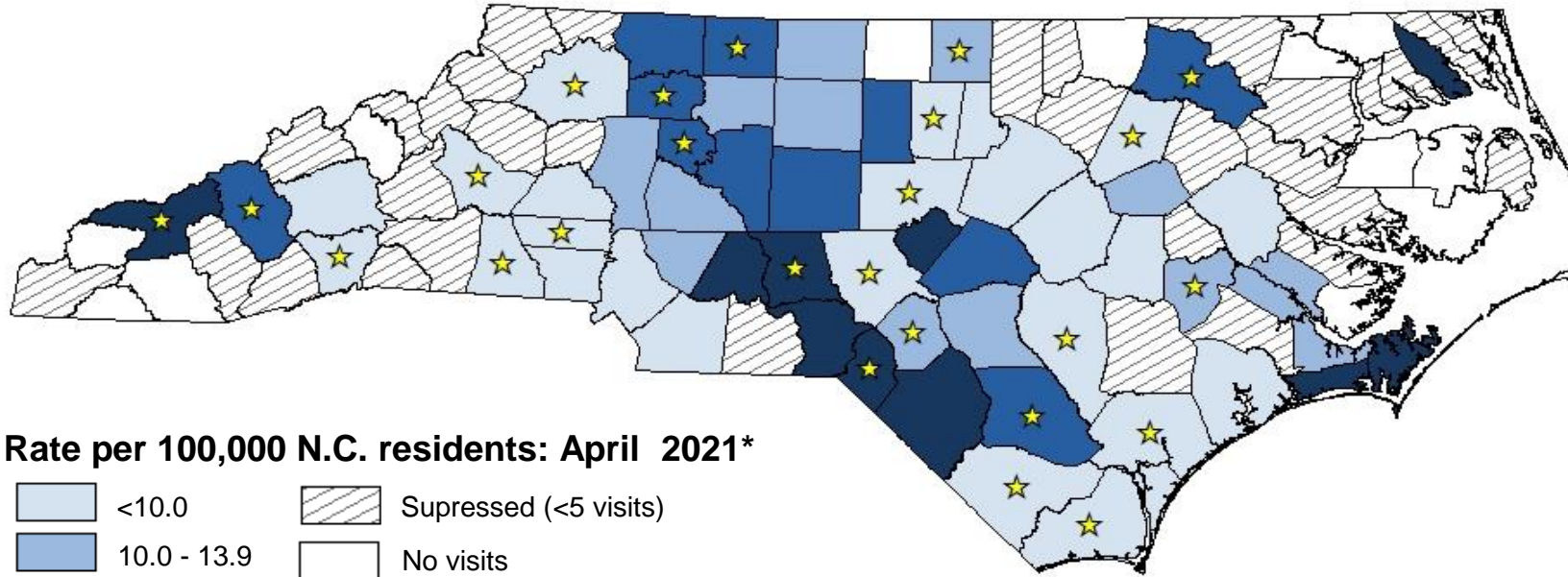
Last 12 Months of ED visits by Med/Drug Class: 2020-2021*



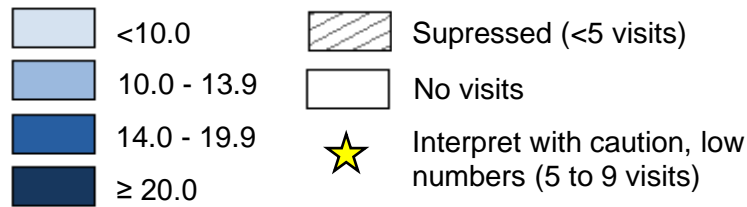
[^]Fentanyl/ fentanyl analogs drug category is a new ICD10CM diagnosis code as of October 2020, prior to this month, this category was a non-specific "other synthetic narcotic" code which we suspected to predominately be fentanyl-related cases.

Note: Chart does not depict all possible drug classes. Drug classes shown are not mutually exclusive. A person may have more than one drug overdose diagnosis code, therefore, a person may be represented in multiple lines in the graph above. For case definitions, go to <https://www.injuryfreenc.ncdhhs.gov/DataSurveillance/poisoning/SummaryTableforPoisoningDefinitions.pdf>

Monthly Med/Drug^ Overdose ED Visits Rate: April 2021*



Rate per 100,000 N.C. residents: April 2021*



*Provisional Data: 2020 ED Visits

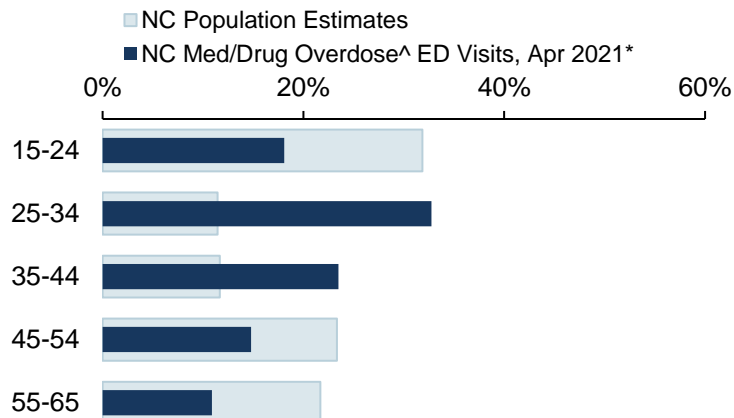
Highest Monthly Rates of Med/Drug^ Overdose ED visits among Counties ≥10 visits: April 2021*

County	Count	Rate [†]
Robeson	88	67.4
Pasquotank	13	32.6
Stanly	18	28.7
Richmond	11	24.5
Carteret	15	21.6
Lee	13	21.0
Surry	13	18.1
Davidson	30	17.9
Harnett	22	16.2
Alamance	26	15.3
Randolph	22	15.3
Cabarrus	29	13.4
Rockingham	12	13.2
Statewide	1,359	13.0

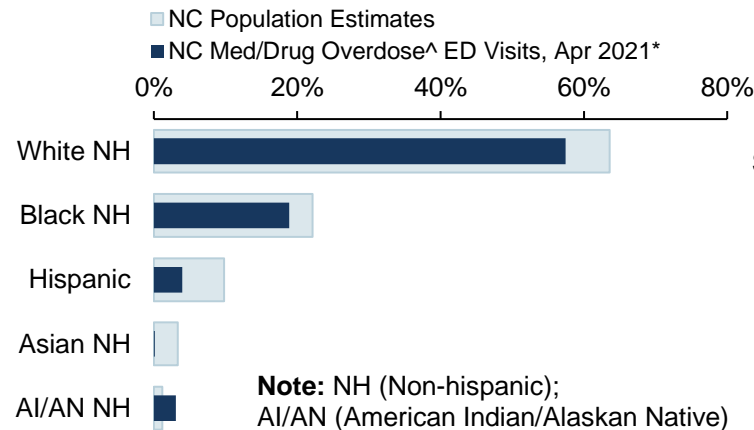
[†]Please note that rates are calculated using the current month of data. Counties listed in "Highest Monthly Rates of Med/ Drug Overdose^ ED visits" table will likely change each month. Therefore, the counties listed this month cannot be generalized as the top burden counties for the year.

Demographics of Med/Drug Overdose^ ED Visits Compared to Overall NC Population Estimates

ED Visits by Age Group

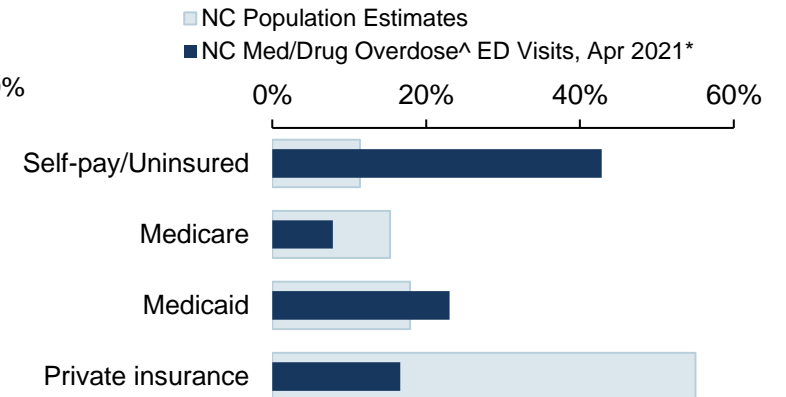


ED Visits by Race Ethnicity



Note: NH (Non-hispanic); AI/AN (American Indian/Alaskan Native)

ED Visits by Insurance Coverage



Data Sources: ED Data-NC DETECT is North Carolina's statewide syndromic surveillance system. ED visit data from NCDETECT are provisional and should not be considered final. For training on NCDETECT, contact Amy.Ising@ad.unc.edu; Population Data-U.S. Census Bureau, <http://quickfacts.census.gov>; Insurance coverage Data-Kaiser Family Foundation estimates based on the Census Bureau's American Community Survey, 2008-2019, www.kff.org/other/state-indicator/total-population.

^Report is based on initial encounter unintentional and undetermined intent cases only, for ICD10CM overdose codes of drugs and medicaments with dependency potential within T40, T42, T43, T50.7, and T50.9. Note: Report is restricted to N.C. residents between the ages 15 to 65 years. Self-pay ED visits are compared to the uninsured overall population estimate category.

*Provisional Data: 2021 ED Visits

